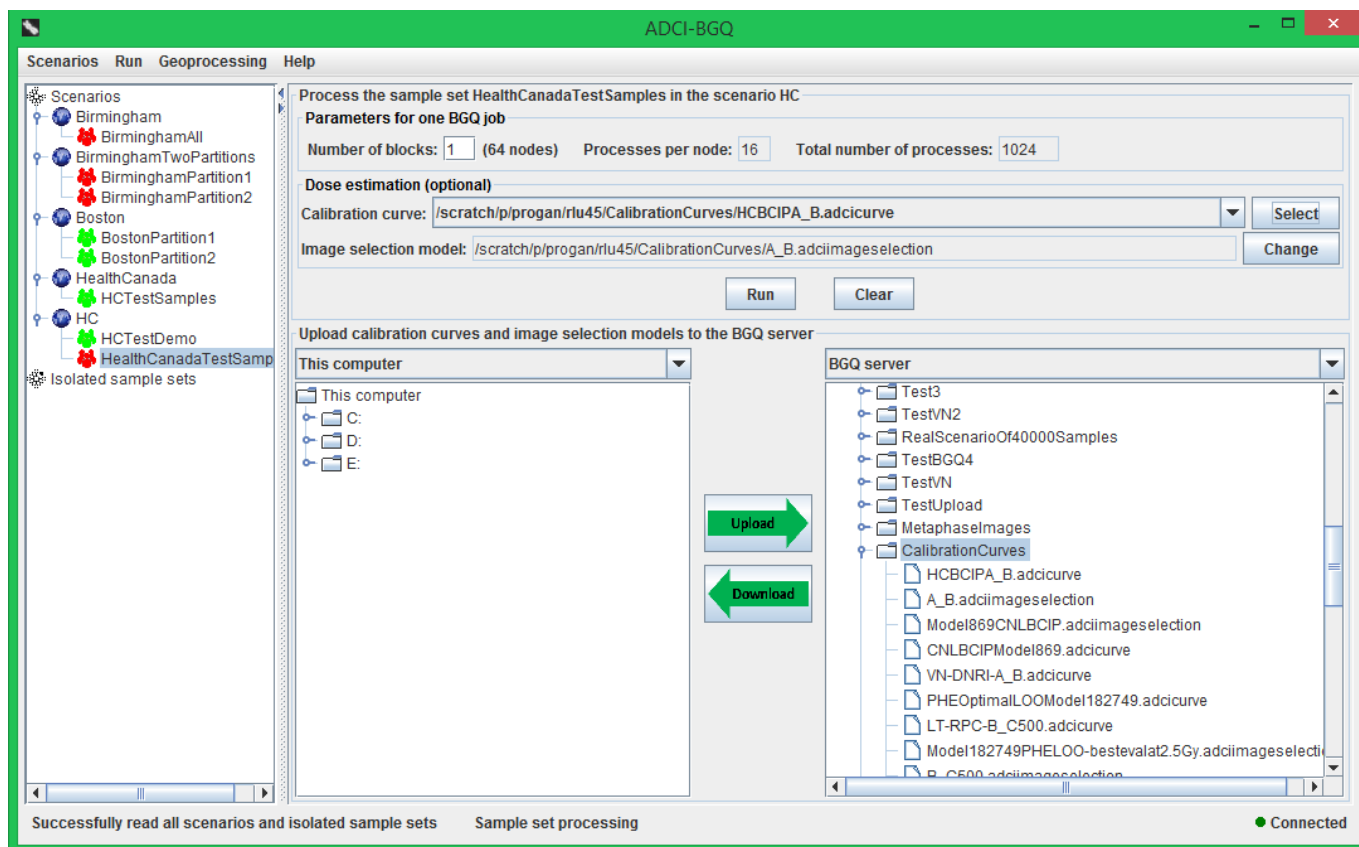


Process a sample set

After creating a sample set, you can process it by selecting it in the sample set tree and clicking the 'Process sample set' menu item under the 'Run' menu.

Prepare



First, you need to set the value of the parameter 'Number of blocks', which is required by submission of one BGQ job. The recommended value is the prepopulated 1. Optionally, you can also choose to simultaneously estimate radiation doses that the samples were exposed to while processing the sample set, by selecting a calibration curve on the BGQ server with the 'Select' button.

Upon selection of a curve, the image selection model associated with the curve will be automatically displayed in the 'Image selection model' text field. You can also use the 'Change' button to change the model that is associated with the curve. Use the bottom area of the right panel to first upload the curves and models.

Monitor progress

After setting these information, click the 'Run' button to submit jobs and start the processing of the sample set. A progress dialog will appear.

In this dialog, the top grouping box displays the detailed progress information for the particular job currently being selected in the drop-down list, with the progress bar graphically showing the percentage progress of this job.

- 'Status' label: the current status of the job, among three possible statuses (Queued, Running, Finished).
- 'Elapsed time' label: how long the job has been running for.
- 'Completed samples' label: the number of completed samples in this job to date/the total number of samples in this job.
- 'Completed images' label: the number of completed metaphase images in this job to date/the total number of images in this job (i.e. the sum of image counts in all samples in this job).

The image shows a 'BGQ job monitor' dialog box. It has a green title bar with a close button. The main content area is divided into two sections. The top section displays details for a selected job: 'Job ID: bgqdev-fen1-ib0.208898', 'Status: Queued', 'Elapsed time: 00:00:00', 'Completed samples: 0/2', and 'Completed images: 0/1017'. Below this is a progress bar showing 0%. The bottom section displays overall statistics: 'Job count: 3', 'Queued: 3', 'Running: 0', 'Finished: 0', 'Used blocks: 0/64', 'Total elapsed time: 00:00:00', 'Total completed samples: 0/4', and 'Total completed images: 0/2790'. Below this is another progress bar showing 0%. At the bottom of the dialog are four buttons: 'Show completed samples', 'Save clock time', 'OK', and 'Cancel'.

The middle grouping box displays the overall progress information for all jobs, with the progress bar graphically showing the percentage progress of all jobs.

- 'Job count, Queued, Running, Finished' labels: the total number of jobs submitted and the number of jobs in each status.
- 'Used blocks' label: the number of blocks in the BGQ supercomputer currently being used by ADCI-BGQ.
- 'Total elapsed time' label: how long all jobs have been running for since the first one started running.
- 'Total completed samples' label: the number of completed samples in all jobs to date / the number of samples in this sample set.
- 'Total completed images' label: the number of completed samples in all jobs to date / the number of images in this sample set.